

Major Parts of Machine

- *Spray System with Controller*
- *Gantry Robot*
- *IR Heating & Cooling Oven*
- *UV Inspection Chamber*
- *Chain Conveyor*
- *PLC Controlled Panel with HMI Display*

SMLC PRESSURE POT



| SR.NO | DISCRIPTION | SPECIFICATION |
|-------|--|-----------------------------|
| 1 | PRESSURE POT CAPACITY | 2.5, 5, 9, 15, 20 LITRES |
| 2 | MATERIAL (OPTIONAL) | MS, SS 304 , 316 , |
| 3 | POT COATING (OPTIONAL) | TEFLON COATED |
| 4 | STIRRER MONTING (OPTIONAL) | FOR ALL SIZES |
| 5 | PRESSURE POT INPUT AIR | 0 -5 BAR |
| 6 | PRESSURE POT AIR INLET CONNECTIONS | 1/4" X 6 MM PU TUBE FITTING |
| 7 | PRESSURE POT MATERIAL OUTLET CONNECTIONS | 3/8 " BSP |
| 8 | CONTROLLED AIR PRESSURE SETTING | 0 – 5 BAR |
| 9 | OPERATION | PNEUMATIC |
| 10 | SENSORS (OPTIONAL) | LEVEL SENSOR |
| 11 | PRESSURE MESURMENT | BAUMER PRESSURE GAUGE |

Spray System with controller

SV70

Thin-film coated material forms a clear pattern definition

The SV70 conformal coating valve is designed to apply various patterns of moisture-proof material coating on PCBs with a lower flow rate. With an innovatively designed square-cut nozzle, SV70 ensures superior stability without over spraying, as well as a faster and drip-free dispensing process.

Features

- Ensures dispensing consistency at start/stop points
- Less maintenance required
- No mist, overspray, bubbles

Product specification

| | |
|------------------------|---|
| Size | ø26.9 (Fluid body) x 141mm |
| Weight | 3.34g (without square nozzle and fluid fitting) |
| Fluid body | SUS303 |
| Installation hole | M6 tapped hole |
| Maximum fluid pressure | 0.7MPa |
| Nozzle (option) | #4, #6, #9 |

* Fluid feeding channel of this valve is patented.



Plot No 7, Gat No 627/1/1b, Kuruli Tal. Khed, Dist Pune -410501

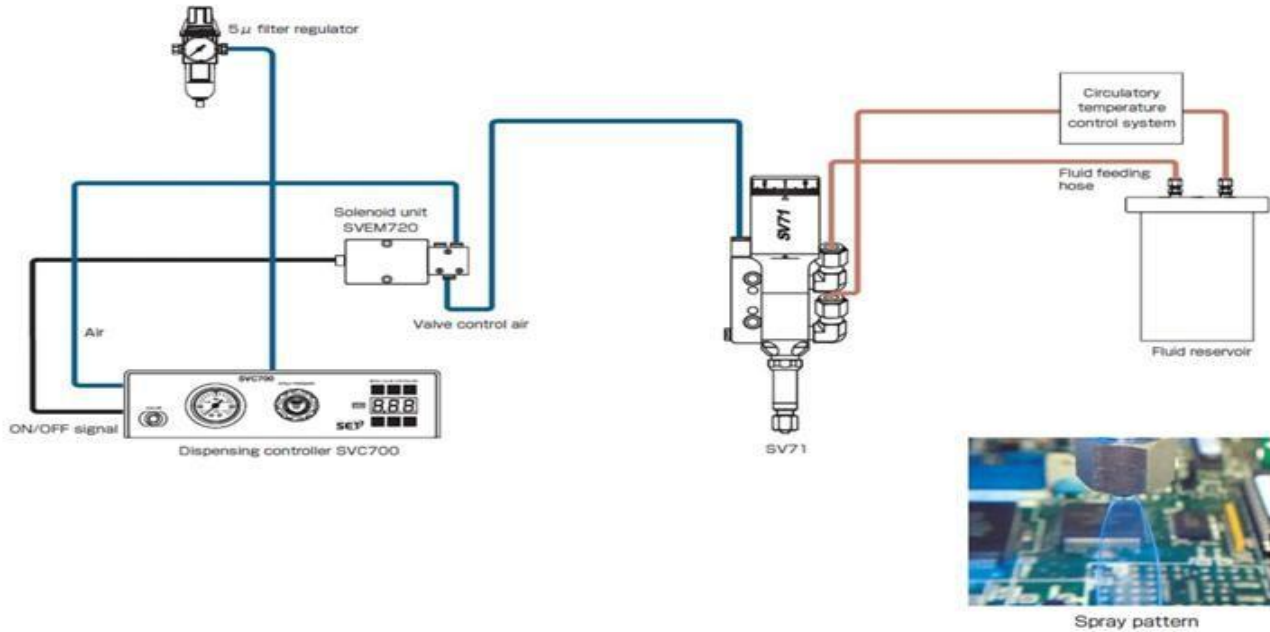
Mob: +91- 9990871367



Email: delhi.sales@smlcuniversal.com

WEB: www.smlcuniversal.com

SV70 Conformal Coating valve system



(specified for SV70)

SVC720F



Solenoid valve SVEM720 Solenoid valve SVEM800

Fast response pneumatic solenoid maximizes dispensing performance

*Solenoid valve SVEM720 or SVEM800 should be used.

Plot No 7, Gat No 627/1/1b, Kuruli Tal. Khed, Dist Pune -410501

Mob: +91- 9990871367



Email: delhi.sales@smlcuniversal.com

WEB: www.smlcuniversal.com

Specifications

| | SVC720V | SVC620S | SVC620CD | SVC720F |
|---|--|----------------|----------|------------------------|
| Power | DC24V (VAC100-240 adapter) | | | |
| Power consumption | 18W | | | |
| Air Input requirement | 0.4MPa~0.7MPa | | | |
| Pressure setting range | 0~0.50MPa (Valve operating pressure : more than 0.40MPa) | | | |
| Nozzle air pressure setting range | — | 0~0.50MPa | | — |
| Time setting range | — | 0.005~999.9sec | | — |
| Start input | Footpedal, Band switch, signal for VDC5-24 (I/O) | | | |
| I/O | D-sub 9 pin connector | | | |
| Storage condition | 5°C~40°C (non-condensing) | | | |
| External dimensions () including protruding portion | W250×D139(177)×H76(78) | | | W160×D139(176)×H76(78) |
| Weight | 1.5kg | 1.4kg | 0.8kg | |
| Accessories | AC adapter Foot pedal switch | | | |

Gantry Robot

The industrial robot has an automatic dispensing area of (800 x 600 x 100 mm) and must be supported by main and idle supports on each side of the machine. These supports also set the height of the robot. The in-line Cartesian robot operates above the dispensing application and is therefore suited as an assembly robot for conveyors and work cells. The dispensing robot is available in 3 axes models.

Programming is simple with easy-to-follow English language instructions. Commands are followed and responses entered by a Teach Pendant. An HMI display prompts the user for a data input and once confirmed, automatically displays the next instruction. By this method a program can be created quickly and simply. All machines include 16 I/O signal interface for connection to tools and controllers.

| | |
|------------------------------|--|
| Item Number | SMLC |
| Maximum Working Area (X/Y/Z) | 800*600*100mm |
| Maximum Speed (X&Y/Z) | 100mm/sec |
| Work Load | 5 Kg |
| Tool Load | 10 Kg |
| Repeatability | +/- 0.02 mm |
| Motion Control | Controlled movement in the path |
| Drive System | 3-phase Servo motors (Siemens Make) |
| Linear Actuator | Festo Make |
| Data Memory | Loading of job profile through DXF File |
| I/O Signals | 1-6 Interfacing |
| External Interface | Loading of DXF File through USB |
| Power Supply | 3 Phase |
| Dimensions (W x D x H) | Customized |
| Weight | 150Kg |

Plot No 7, Gat No 627/1/1b, Kuruli Tal. Khed, Dist Pune -410501

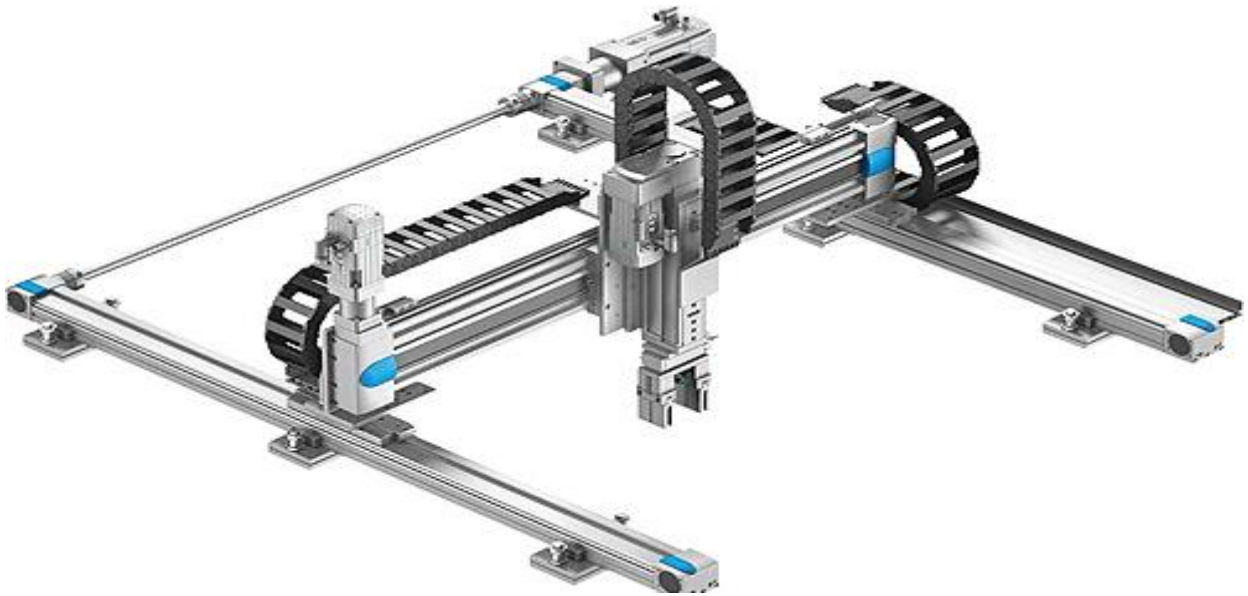
Mob: +91- 9990871367



Email: delhi.sales@smlcuniversal.com

WEB: www.smlcuniversal.com

SML Industries



Plot No 7,Gat No 627/1/1b,Kuruli Tal. Khed,Dist Pune -410501

Mob: +91- 9990871367



Email: delhi.sales@smlcuniversal.com

WEB: www.smlcuniversal.com

IR Heating Oven

The IR Curing Oven for one sided selective conformal coating of printed circuit boards (PCBs) maximizes productivity and yield, conserves factory floor space, and reduces board-handling requirements. Available for integration with Protection Concept Modular Line, the IR Curing Oven can be configured for cure pass and pass-through board processing under the IR curing process.



Plot No 7, Gat No 627/1/1b, Kuruli Tal. Khed, Dist Pune -410501

Mob: +91- 9990871367

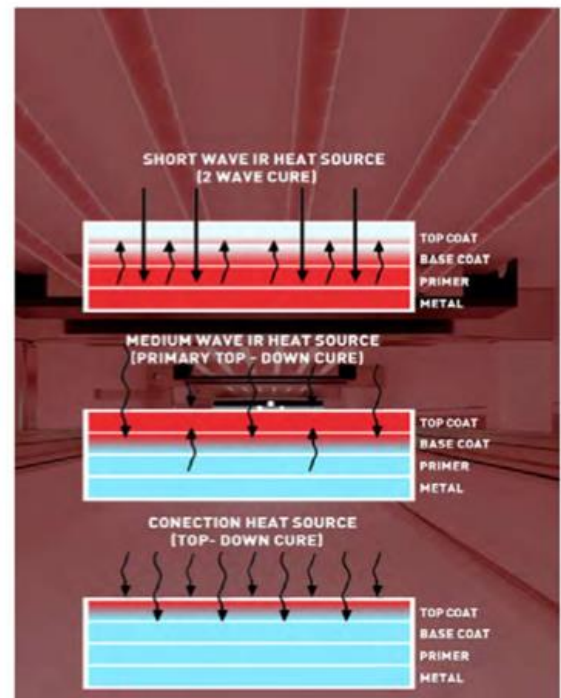
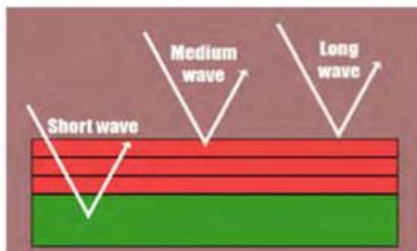


Email: delhi.sales@smlcuniversal.com

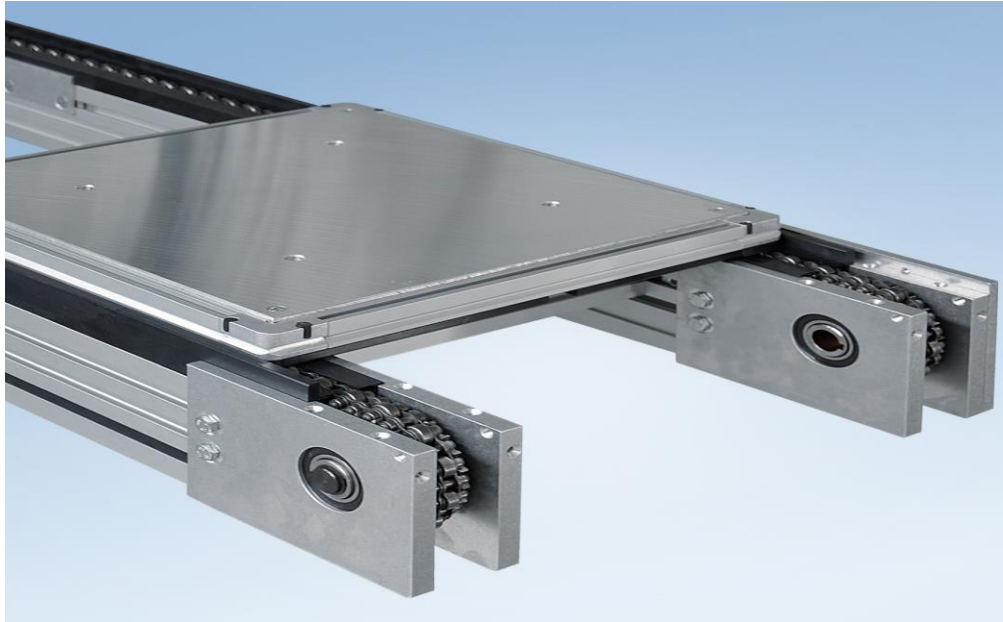
WEB: www.smlcuniversal.com

TECHNICAL DETAILS

- **Adjustable speed:** Transmission system use an adjustable speed at 100-2000mm/min
- **Electric supply:** Voltage supply: 3phase,380V 50/60Hz. Power consumption: 7 KVA max.
- **With adjustment:** Electrical and automatic width adjustment. Automatic conveyor width adjustment
- **Short wave ir heat source:** 2 wave cure
 - Medium wave: Primary top - down cure
 - Conection heat source: Top - down cure
- **Cover:** Infrared (IR) radiation covers the wavelength range above 800nm and is subdivided in IR-A, IR-B and IR-C ranges



Chain Conveyor



SMLC Provide 9 Meter chain conveyor with pallet mounting on conveyor. MS Fabricated structure of conveyor. Conveyor driven by gear drive.

UV Inspection Chamber



SMLC Provide the conveyORIZED UV Inspection chamber. Which length is approx. 1/2 meter.

Plot No 7, Gat No 627/1/1b, Kuruli Tal. Khed, Dist Pune -410501

Mob: +91- 9990871367



Email: delhi.sales@smlcuniversal.com

WEB: www.smlcuniversal.com

PLC CONTROL PANNEL WITH 10" HMI

| ITEMS | MAKE AND SPECIFICATION |
|-----------------|------------------------|
| PLC | Siemens (S7 1200) |
| HMI | Exor 10" |
| Controller | SAN E Tech (SPD720) |
| Lamps | Siemens/Telemecanique |
| Cables | Polycab/Lapp |
| Spray Valve | SAN E Tech (SV70) |
| Pneumatics | SMC |
| Electric Slides | Festo |
| Servo Motor | Panasonic |
| Control box | Self |